

## September 2010 – Holunder

Größe ca. 8 x 8 cm – 6 Farben (Anchor/Madeira)

## September 2010 – Elder

dimension ca. 8 x 8 cm – 6 colors (Anchor/Madeira)



**Diese Stickvorlage darf ausschließlich kostenlos weitergegeben werden.  
Der Verkauf ist untersagt!**

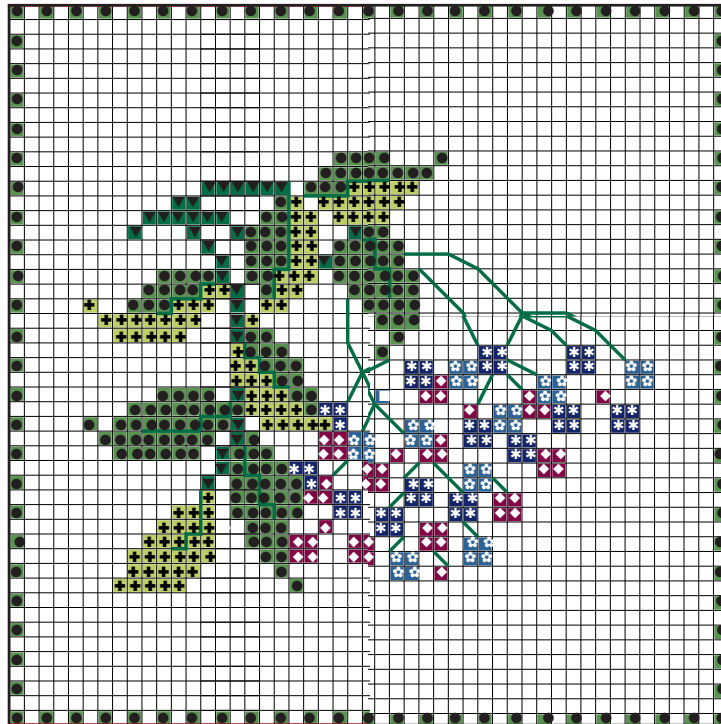
**This stitch chart may only be distributed for free.  
It is not allowed to sell this chart!**

### September 2010 – Holunder

Größe ca. 8 x 8 cm – 6 Farben (Anchor/Madeira)

### September 2010 – Elder







dimension ca. 8 x 8 cm – 6 colors (Anchor/Madeira)



Motiv-Mitte

RICO DESIGN Leinenbänder (11 Fäden/cm), 20 cm, Art. 55.020.1001 oder  
RICO DESIGN AIDA Stickband (5,4 Stiche/cm), 20 cm, Art. 54.020.0001

Sticktwist und Garnverbrauch in ganzen Strängchen

Farbe	Symbol	Anchor	Madeira	Str.
	× ×	122	2702	1
	* *	123	0914	1
	◆ ◆	70	2608	1
	+ +	265	1308	1
	● ●	267	1503	1
	▼ ▼	269	1507	1

2-fädig über 2 Gewebefäden sticken/Konturen 1-fädig