

Oktober 2010 – Hagebutte

Größe ca. 8 x 8 cm – 6 Farben (Anchor/Madeira)

October 2010 – Rose hip

dimension ca. 8 x 8 cm – 6 colors (Anchor/Madeira)



**Diese Stickvorlage darf ausschließlich kostenlos weitergegeben werden.
Der Verkauf ist untersagt!**

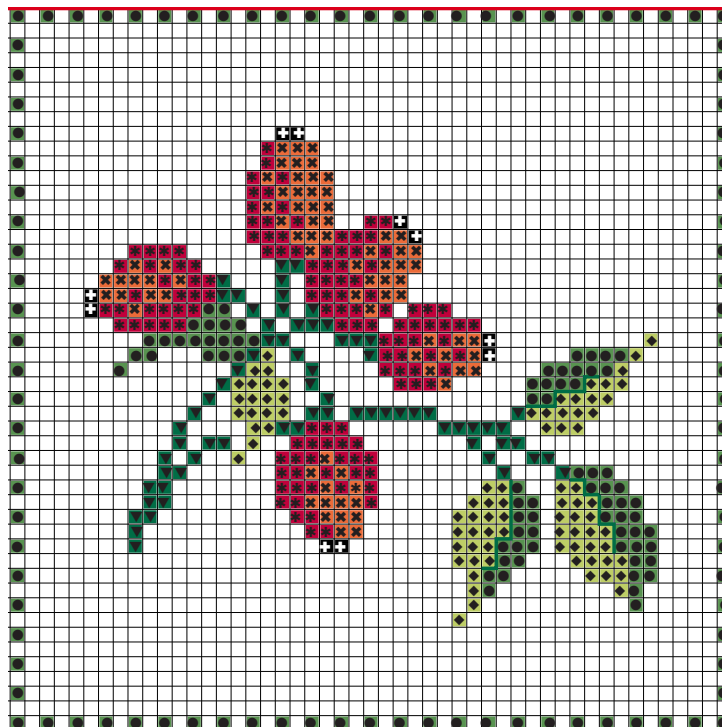
**This stitch chart may only be distributed for free.
It is not allowed to sell this chart!**

Oktober 2010 – Hagebutte

Größe ca. 8 x 8 cm – 6 Farben (Anchor/Madeira)

October 2010 – Rose hip







dimension ca. 8 x 8 cm – 6 colors (Anchor/Madeira)



Motiv-Mitte

RICO DESIGN Leinenbänder (11 Fäden/cm), 20 cm, Art. 55.020.1001 oder
RICO DESIGN AIDA Stickband (5,4 Stiche/cm), 20 cm, Art. 54.020.0001

Sticktwist und Garnverbrauch in ganzen Strängchen

Farbe	Symbol	Anchor	Madeira	Str.
	× ×	11	0213	1
	* *	9046	0510	1
	♦ ♦	265	1308	1
	● ●	267	1503	1
	▼ ▼	269	1507	1
	+ +	381	2004	1

2-fädig über 2 Gewebefäden sticken/Konturen 1-fädig